

PROCEDURE 6.060

FORWARD ELEVATOR BELLCRANK INSTALLATION

In this procedure...

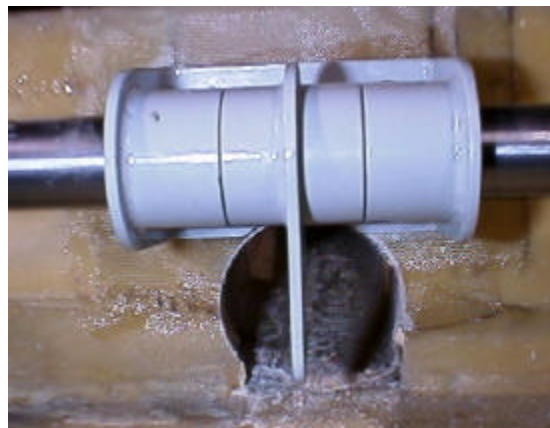
The forward elevator bellcrank will be assembled and installed to forward face of the aft shear tie.

SUPPLIED MATERIALS

<u>Part Number</u>	<u>Qty</u>	<u>Description</u>
213-14-002	1	Idler Bellcrank Fwd
213-14-010	1	Bracket, Idler Bellcrank
213-14-011	1	Tube, Fwd Idler Bellcrank
111-24-067	2	Flap Torque Tube End
111-24-068	2	Connector Torque Tube
111-24-069	16	Washer, Flex Pack
J1616	2	Bearing
BA-168-ZOH	2	Bearing
AN3-4A	16	Bolt
AN3-11A	4	Bolt
AN3-13A	4	Bolt
AN365-1032	24	Nuts
AN960-10L	48	Washers (Thin)

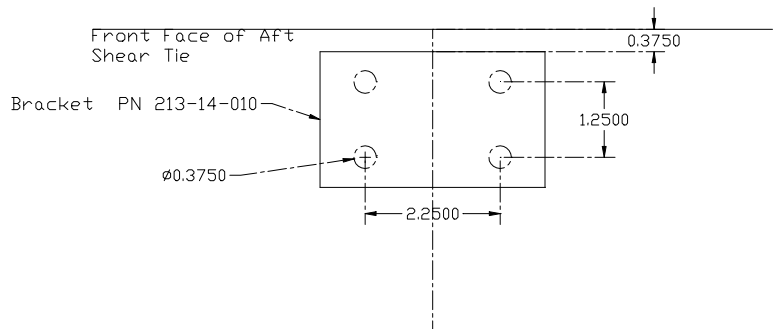
Step 1. Assemble bellcrank Assembly

Clean the preservative from the two J1616 and SCE bearings and lubricate with grease. Press the two J1616 Bearings into the bracket (PN 213-14-010). Press the two SCE bearings into each side of the Idler bellcrank (PN 213-14-002). Place the bellcrank in position between the bearings in the bracket and insert the tube (PN 213-14-011) into place.



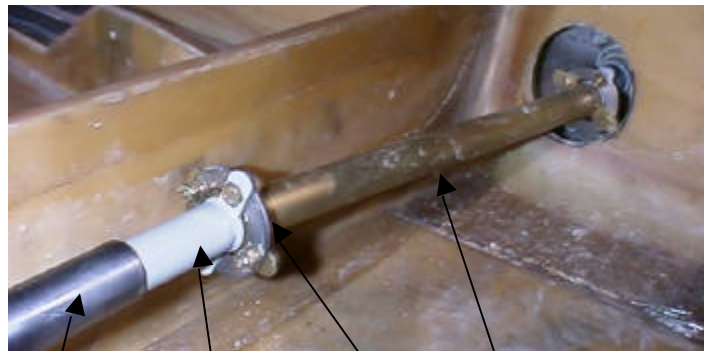
Step 2. Drill mounting Holes.

Drill the mounting holes in the aft shear tie per the dimensions shown in the drawing to the right. Make sure the bracket is on the aircraft centerline and level. Install the bracket using 4 AN3-11A bolts.



Step 3. Install the Flap Torque Tube Ends.

Slip the Flap Torque Tube Ends into the Forward Idler Bellcrank Tube. Final assembly and bolting into position will be accomplished during the final flap rigging process.



Tube FWD Idler Bellcrank 213-14-011	Torque Tube End 111-24-067	Flex Pack Washers 111-24-069	Connector Torque Tube 111-24-068
---	-------------------------------	------------------------------------	--

Picture to the right shows the flap limit switches and flap position indicator sending unit installed on the forward idler bellcrank assembly. These items are available from Express Aircraft Co.

