

Procedure 8.000 Installation of Nose Gear Strut

In this procedure...

The Nose Gear Strut will be installed on the Engine Mount and the Nose Gear Shock Strut will be installed.

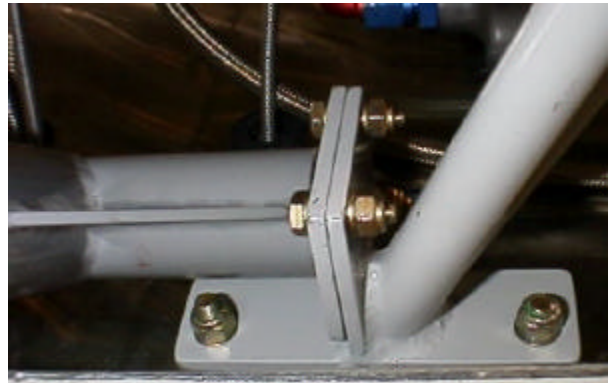
<u>Part Number.</u>	<u>Description.</u>	<u>Qty.</u>
115-13-001	Strut, Nose Gear	1
115-14-007-01	Pivots, Left	1
115-14-007-02	Pivots, Right	1
AN4-7A	Bolt	6
AN960-10	Washer	6
AN385-1032	Nut	6
115-13-002	Shock Strut	1
AN5H-6A	Bolt Drilled Head	2
AN6-17A	Bolt	1
AN960-617	Washer	2
AN365-624	Nut	1

Step 1. Install Pivots in Strut.

Clean the Powder Coat over-spray out of the nose gear pivot area, grease the pivots and install them in the nose gear.

Step 2. Bolt Pivots to Engine Mount.

Position the nose gear pivots in the engine mount and temporarily bolt the pivots to the engine mount. If there is end play on the nose gear clamp the engine mount legs together to eliminate end play between the nose gear and the engine mount.



Step 3. Install the Shock Strut

Position the shock strut between the two ears on engine mount and install the two AN5 Bolts. Lift nose gear strut up and position the lower end of shock strut in-between the two ears on the nose strut.

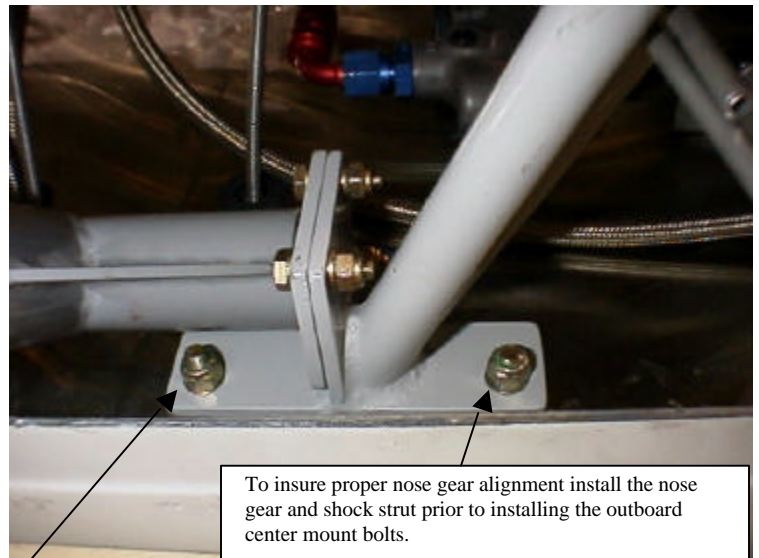


the
the
the
gear

Step 4. Drill Center Engine Mount Bolt Holes.

Drill the two outboard center mount holes and install the two AN5 Bolts. Remove the nose gear and drill the inboard mount holes and install the two AN5 Bolts.

Reinstall the nose gear and shock strut. Drill the lower shock strut mount bolt and install the bolt.



Remove the nose gear and drill and install the inboard mount bolt.

To insure proper nose gear alignment install the nose gear and shock strut prior to installing the outboard center mount bolts.