

PROCEDURE 6.080 INSTALLATION OF ELEVATOR PUSH/PULL TUBES

In this procedure...

The forward, middle and aft push pull tubes will be connected to the elevator torque tube, forward and aft idler bellcrank.

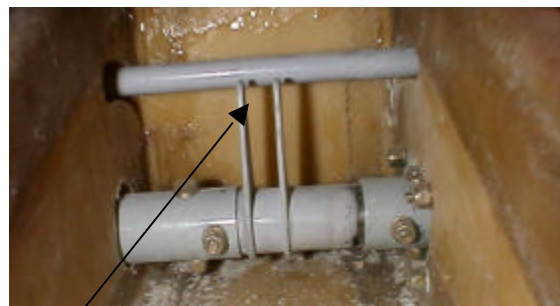
SUPPLIED MATERIALS:

<u>Part Numbers</u>	<u>Qty</u>	<u>Description</u>
213-14-001	1	Push / Pull Tube Fwd
213-14-003	1	Push / Pull Tube Mid
213-14-007	1	Push / Pull Tube Aft
GMM-3M-470	4	Bearing, Male
GMW-3M-570	2	Bearing, Female
AN365-428	6	Nuts
AN3-11A	4	Bolts
AN3-13A	4	Bolts
AN3-4A	16	Bolts
AN960-10	48	Washers
AN365-1032	24	Nuts

Step 1. Connect the forward push / pull tube to the elevator torque tube horns.

Install the jam nut (AN345-428) and bearing (GMW-3M-570) on each end of the forward torque tube. Center the bearing on the threaded rod end.

Place the torque tube through the hole in the carrythrough and connect the forward end to the horns on the elevator torque tube. Make sure the control stick is vertical and that the forward elevator bellcrank is vertical. Adjust the bearings so that the bolt can be installed without moving the bellcrank. Connect the aft end of the torque tube to the forward idler bellcrank on the left side of the bellcrank arm. Install the forward end of the mid push/pull tube to the right side and tighten the bolt of 25 in/lbs.



Connect forward tube to this point

Step 2. Install the Mid Push / Pull Tube.

Screw the jam nuts onto the threaded bearings and screw them into each end of the mid push / pull tube. Slip the tube through the hole in the bottom of bulkhead 162 and then forward through the hole in the aft shear tie. Place the aft push / pull tube bearing on the right side of the horn and the forward push / pull tube of the left side. Install the AN3 bolt washers and nut and torque to 25 in/lb. (Note: Adjust the bearings so that the elevator horn is in the natural position and the forward idler bellcrank is in the natural position.)

Attach the aft end of the mid push / pull tube to the lower hole in the aft idler bellcrank horn. Attach the forward end of the aft push / pull tube to the upper hole in the aft bellcrank horn. Secure with bolts and torque to 20 in/lbs. The aft end of the torque tube will be connected to the elevator horn when the elevators are installed.

